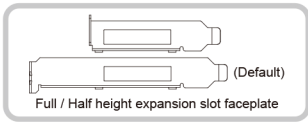
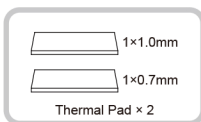
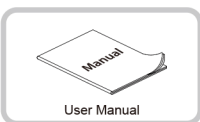
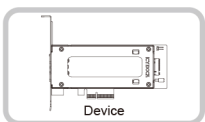


Copyright © ICY DOCK International. All Rights Reserved. 6502662 VER 3.0

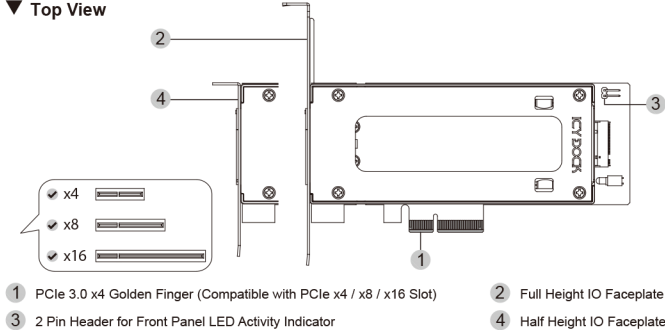
### 1 Package Contents • Packungsinhalt • Contenu • Contenido del paquete • 包装について • 包装説明 • 包装说明



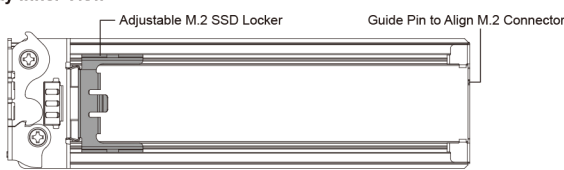
**Note:** Please use the included screw to secure the device.

### 2 Device Information • Geräteinformationen • Informations dispositif • Información del dispositivo • 本体説明 • 機體説明 • 机体说明

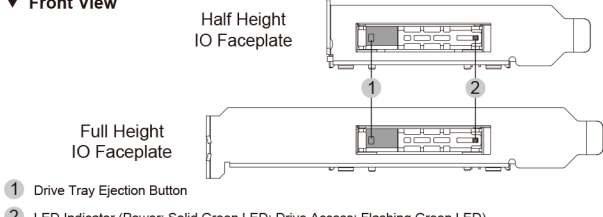
#### ▼ Top View



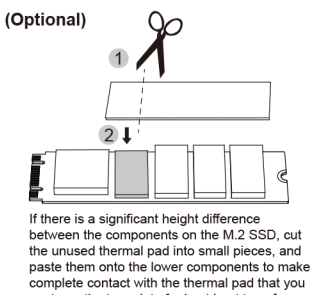
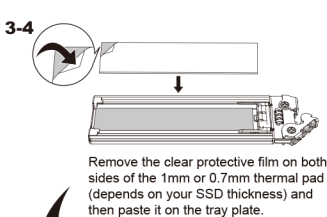
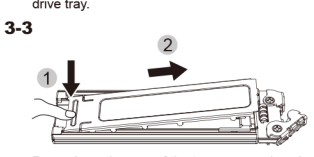
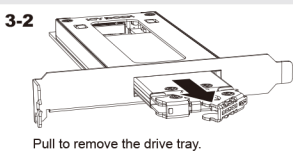
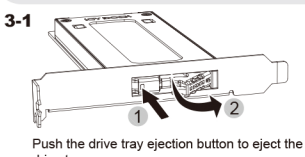
#### ▼ Drive Tray Inner View



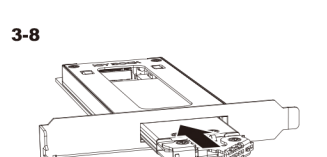
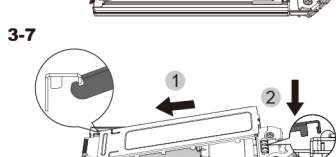
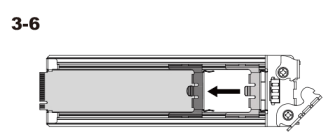
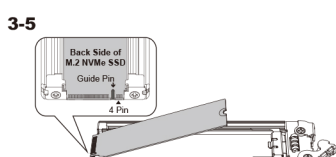
#### ▼ Front View



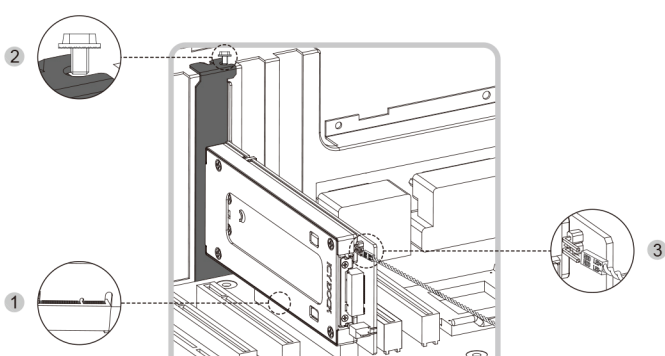
### 3 Installation Guide • Installationsanleitung • Guide d'Installation • Guía de instalación • 製品の組み込み手順について • 操作步驟 • 操作步驟



**Warning**  
If using the 1mm thermal pad causes difficulties to insert the M.2 drive tray into the enclosure, replace the 1mm thermal pad with the 0.7mm thermal pad.



### 4 Device Installation • Installation eines Gerätes • Installation du dispositif • Instalación del dispositivo de • デバイス取付手順 • 装置安裝步驟 • 设备安裝步驟



For the warranty information, please visit [www.icydock.com/warranty.php](http://www.icydock.com/warranty.php)